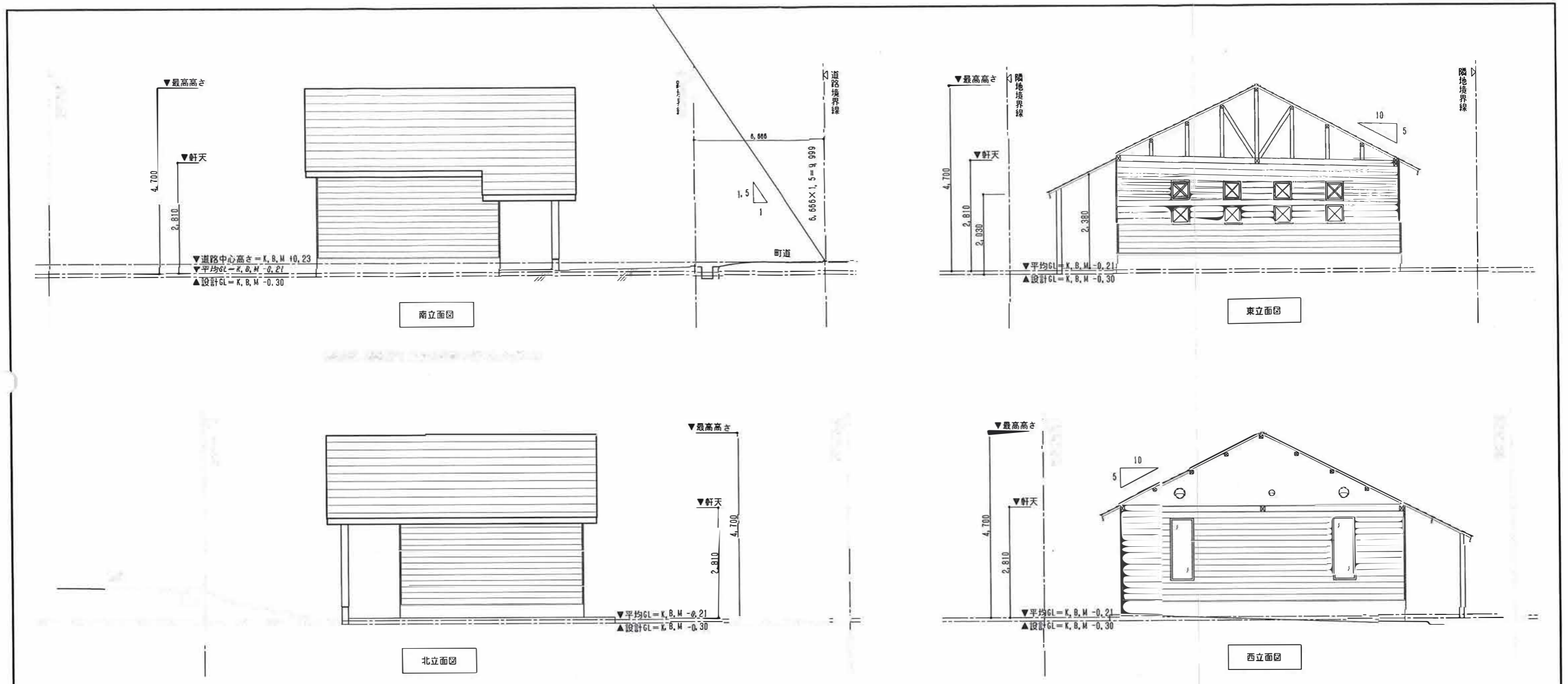
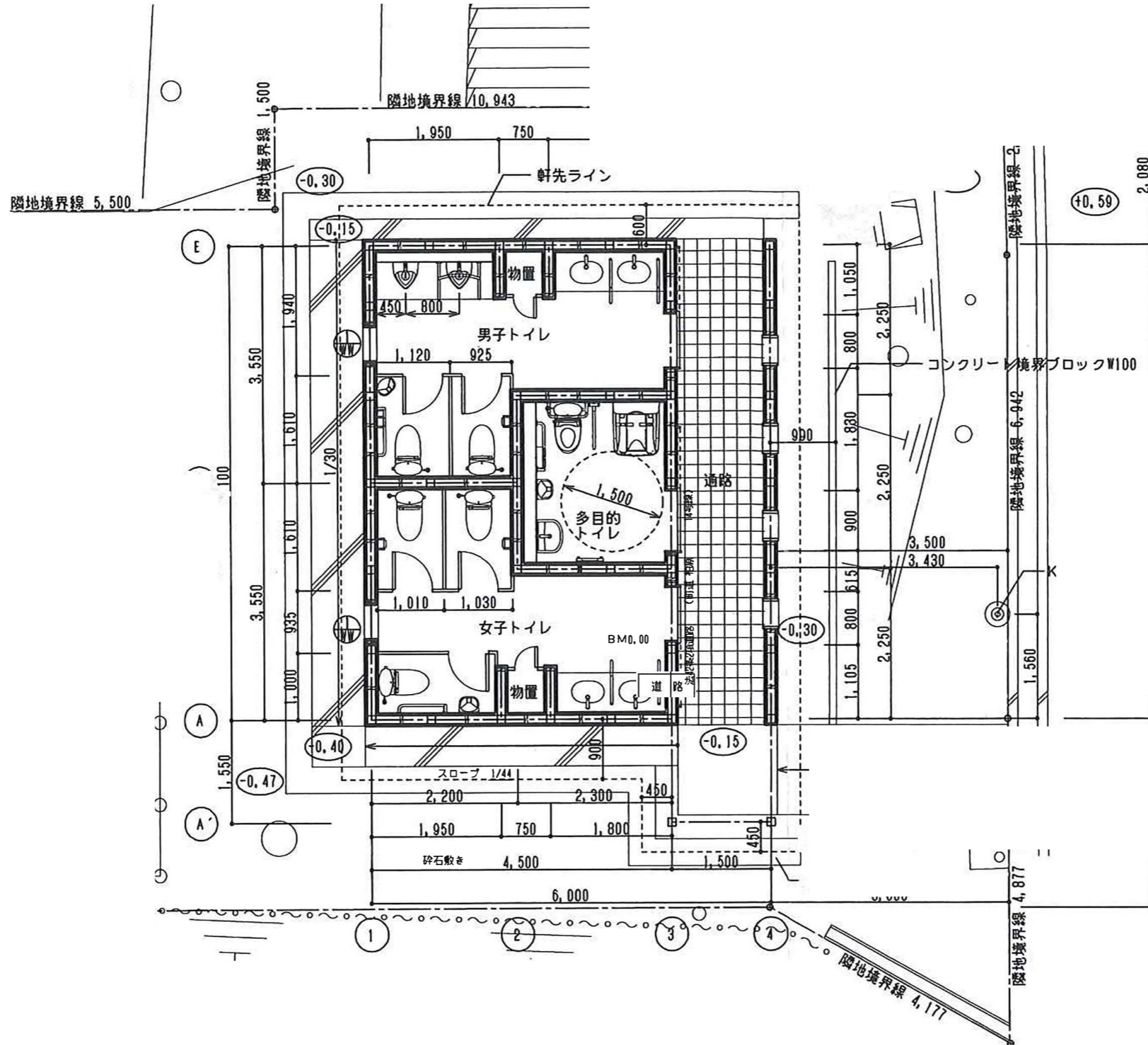


(資料 3)



①トイレ棟 : 41.89㎡

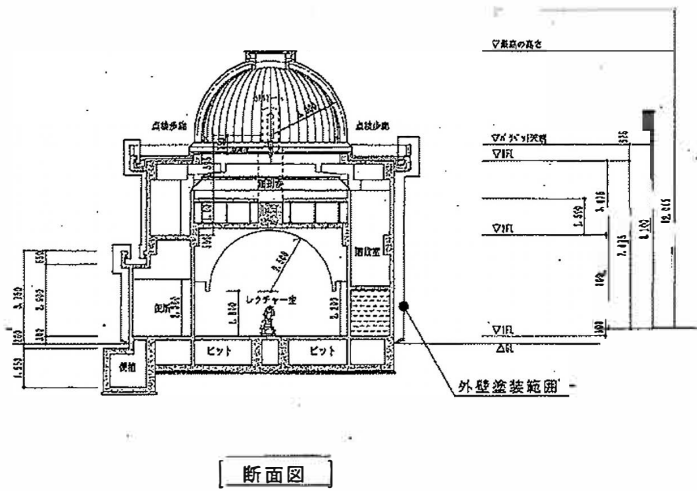
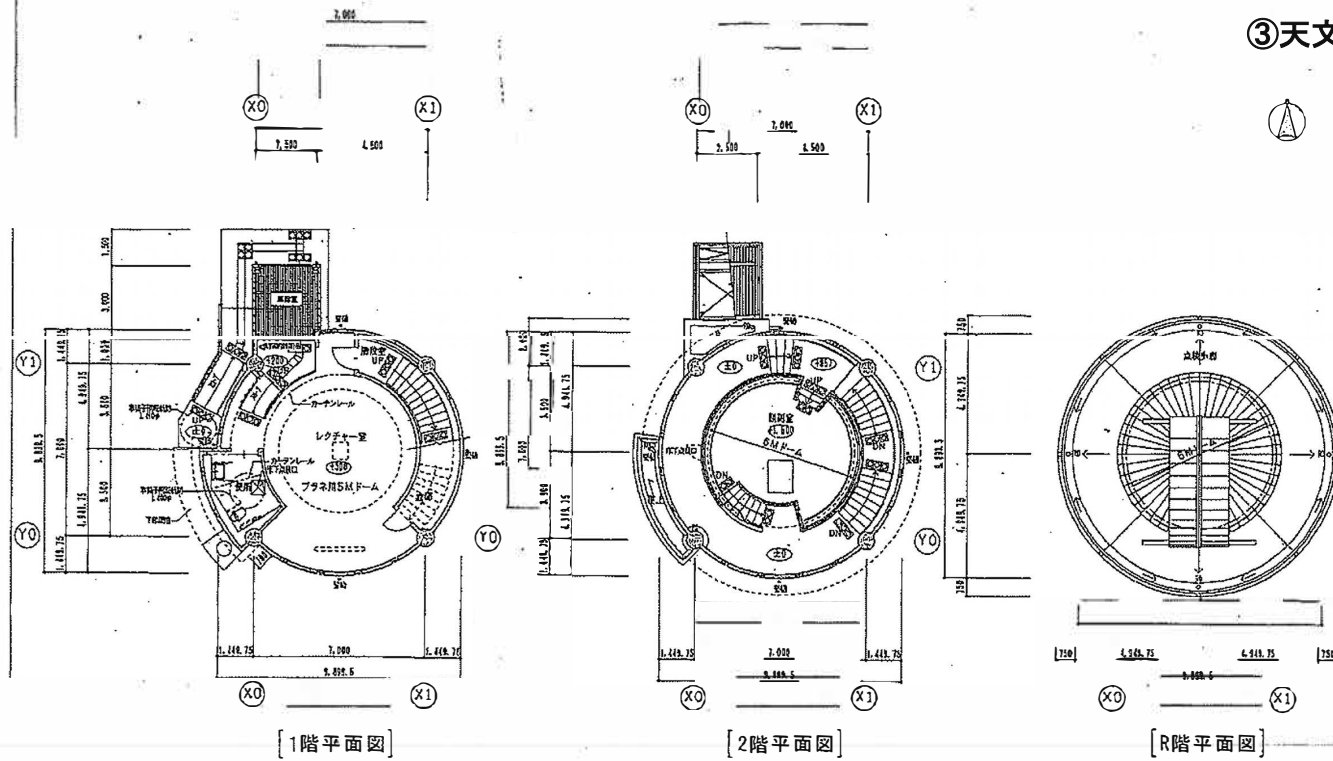


①トイレ棟 : 41.89㎡






③天文台 : 165.34㎡



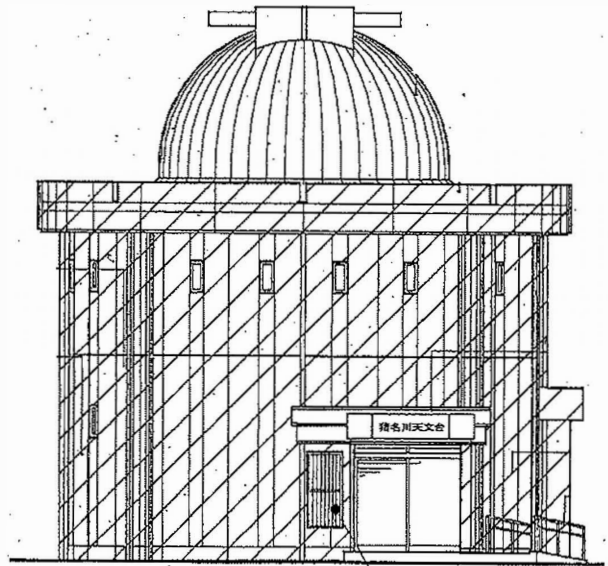
③天文台 : 165.34㎡

 : 外壁改修範囲

<改修内容>

外壁水洗浄 (15MPa程度)、クラック調査・補修のうえ  
外壁化粧防水材塗装

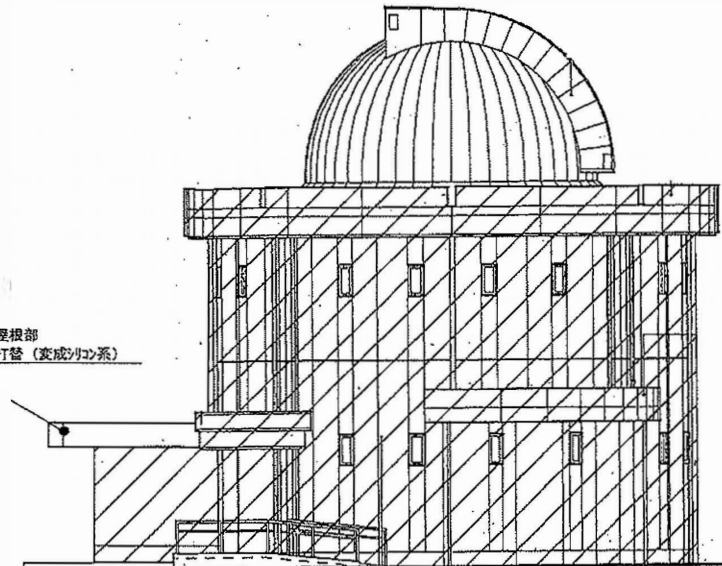
構造目地: シーリング打替 (ネリウレタン系)  
物廻り: シーリング打替 (変成シリコン系)



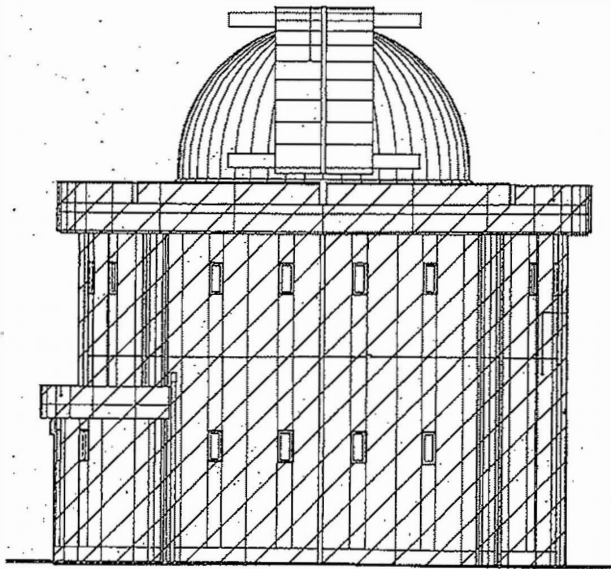
北面立面図

格子: 耐候性塗料塗リ (DP1級)

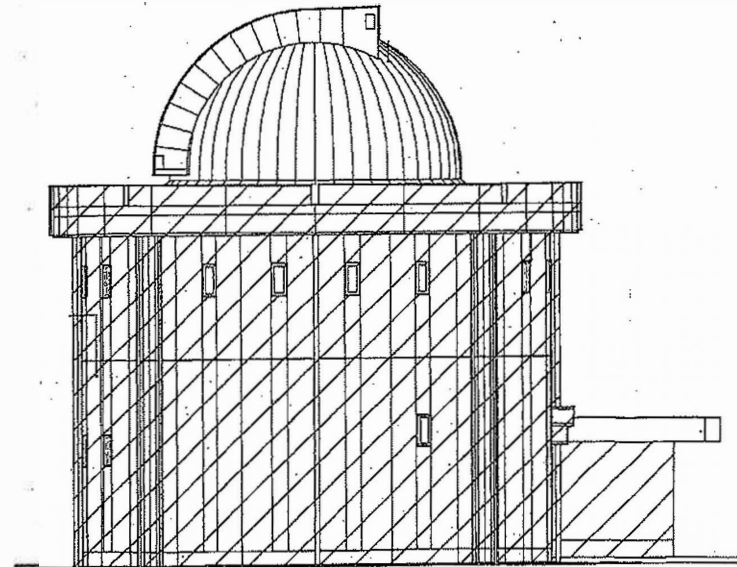
風除室屋根部  
シーリング打替 (変成シリコン系)



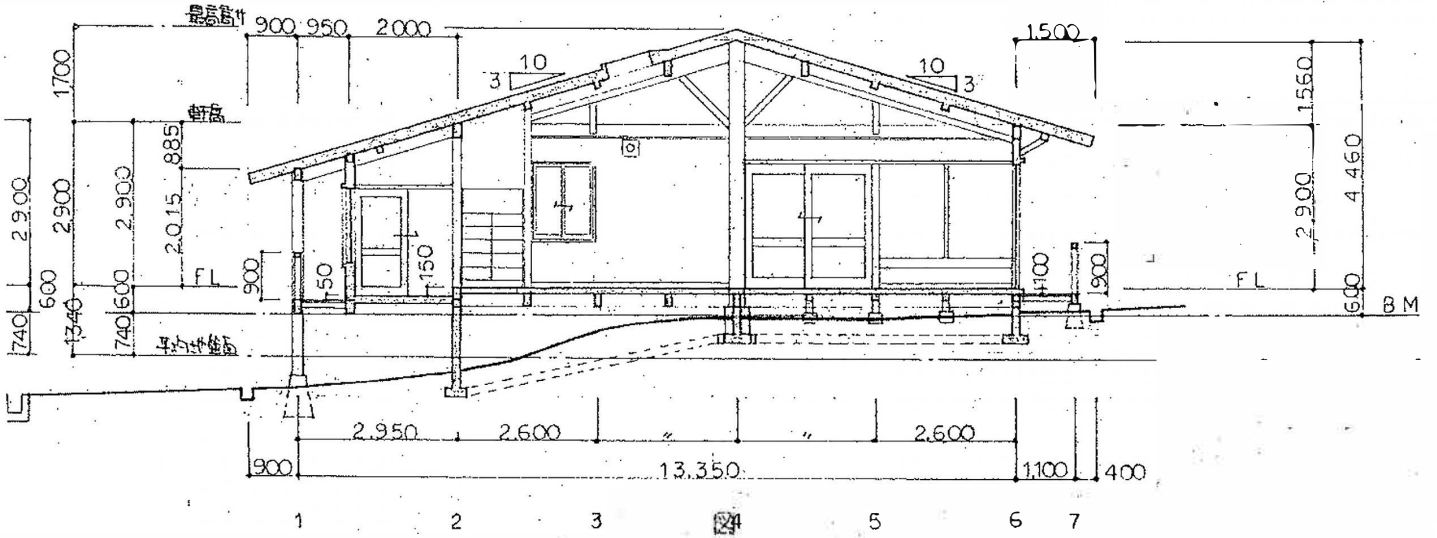
西面立面図



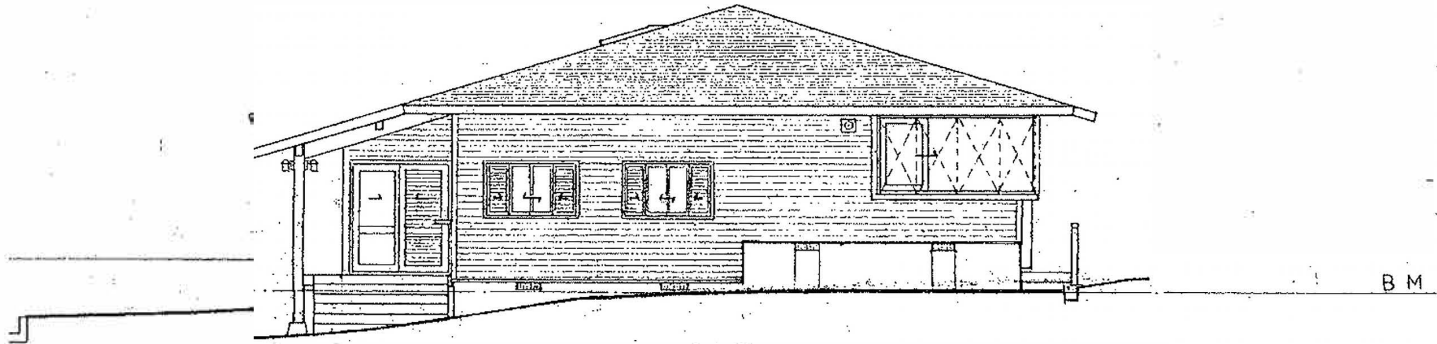
南面立面図



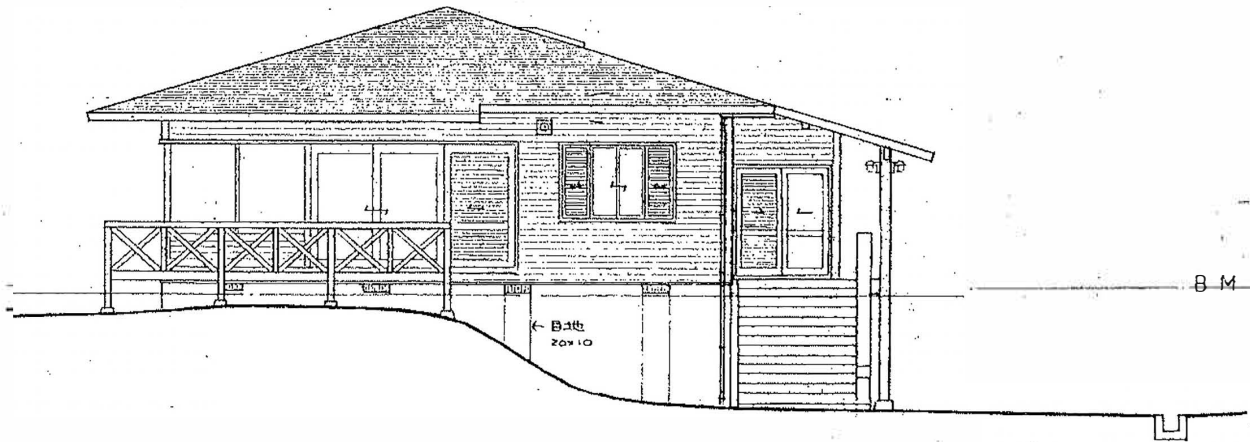
東面立面図



断面 2 1:100

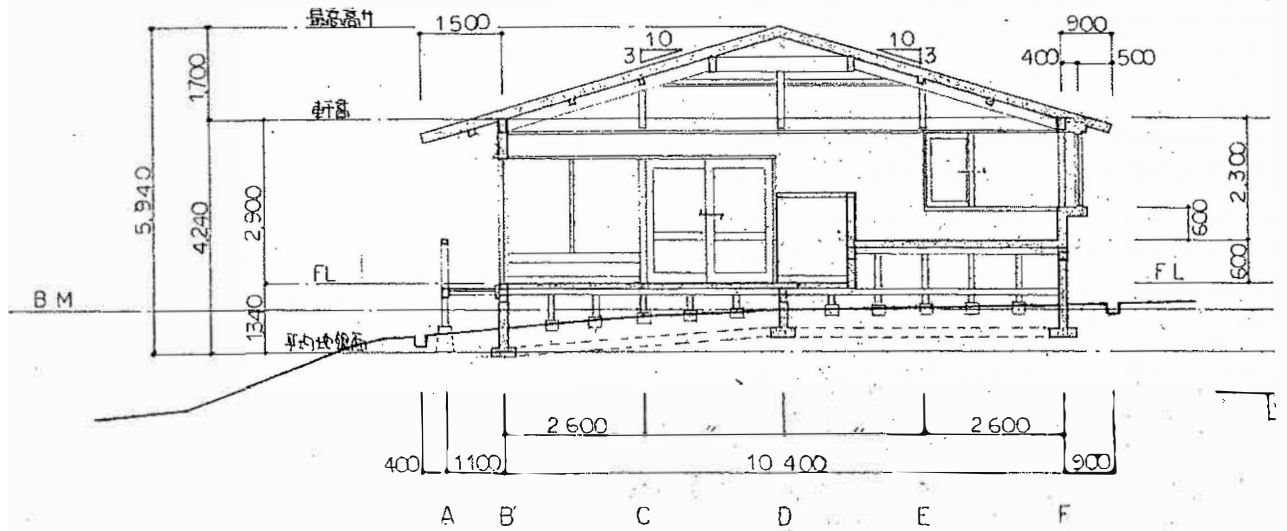


北側立面图 1:100

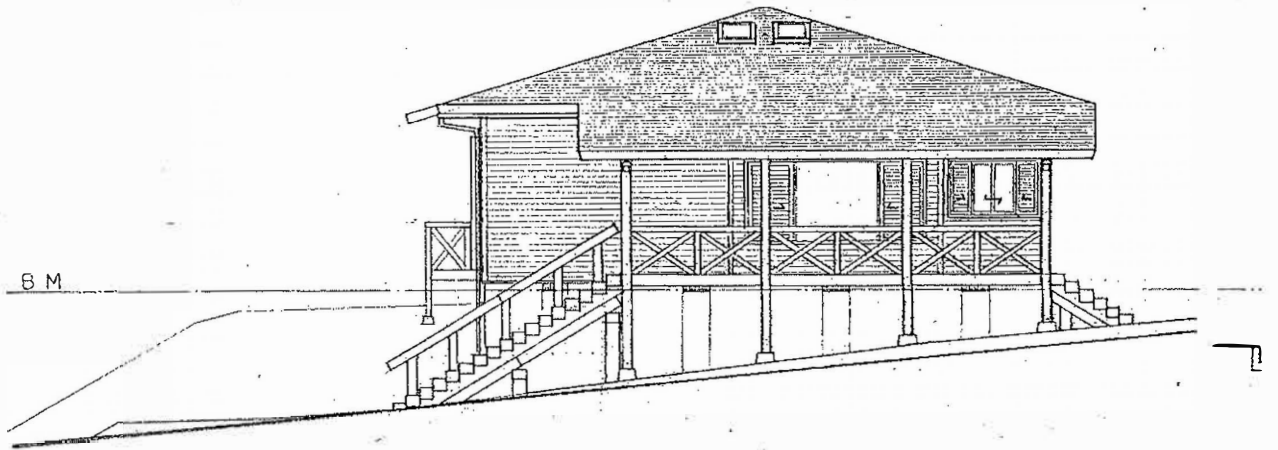


立面图 1:100

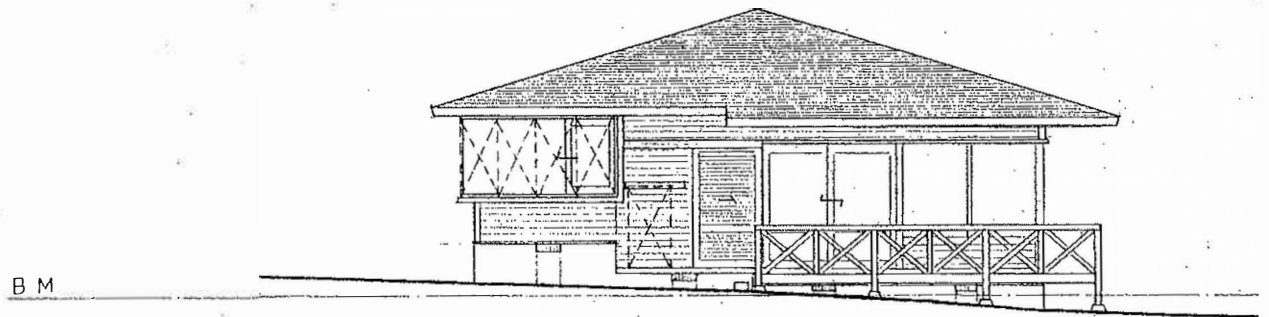
④展示小屋：137.22m<sup>2</sup>



断面图 1 1:100



东侧立面图 1:100

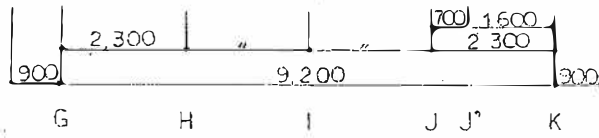
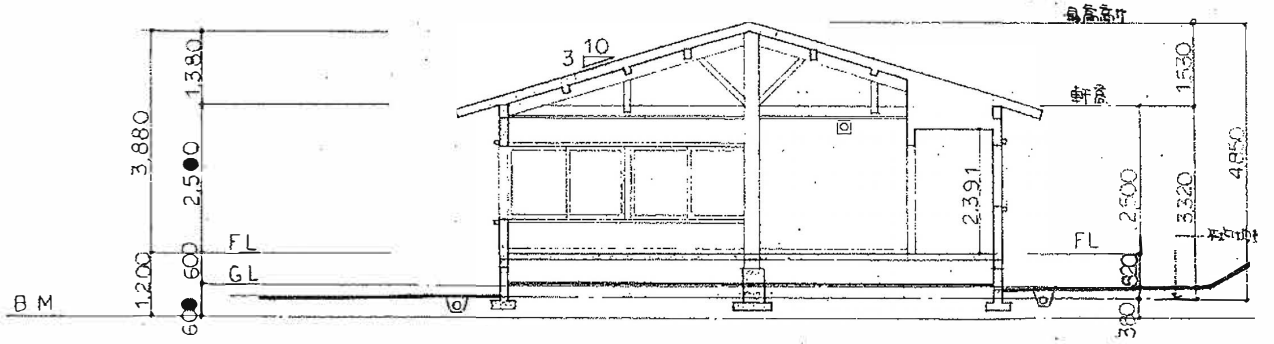


西侧立面图 1:100

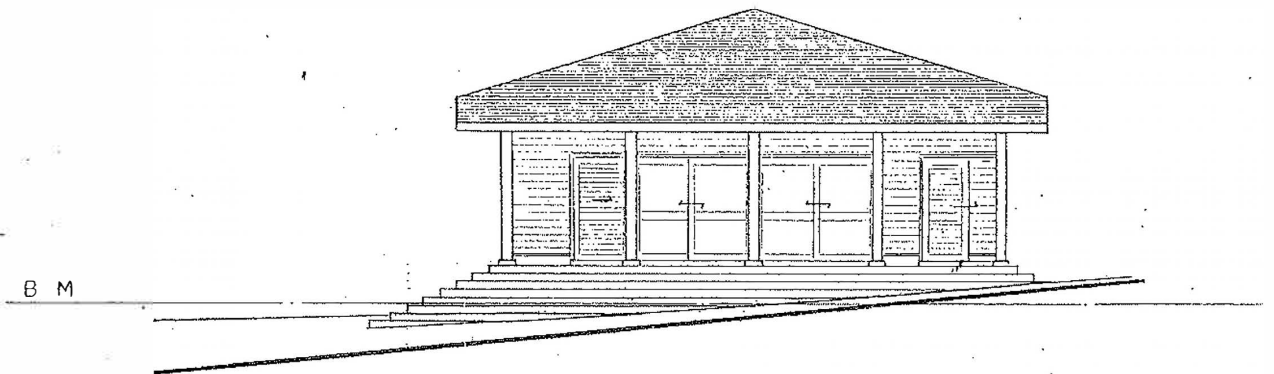




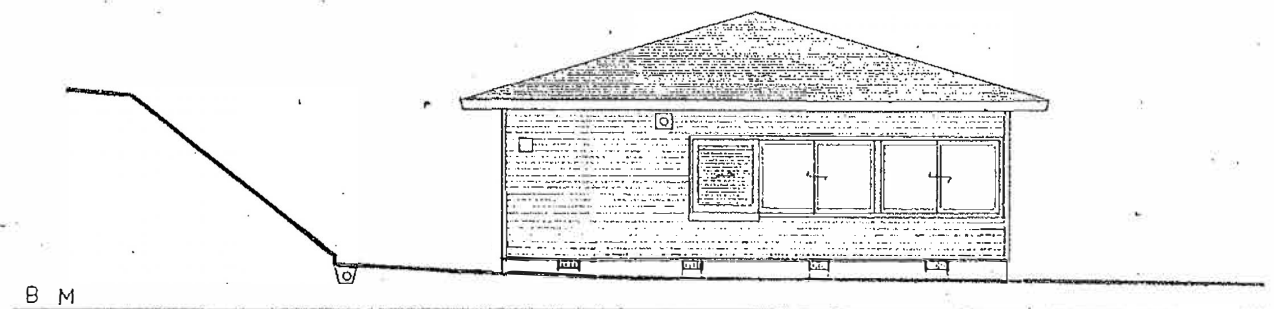




断面图 1 1:100

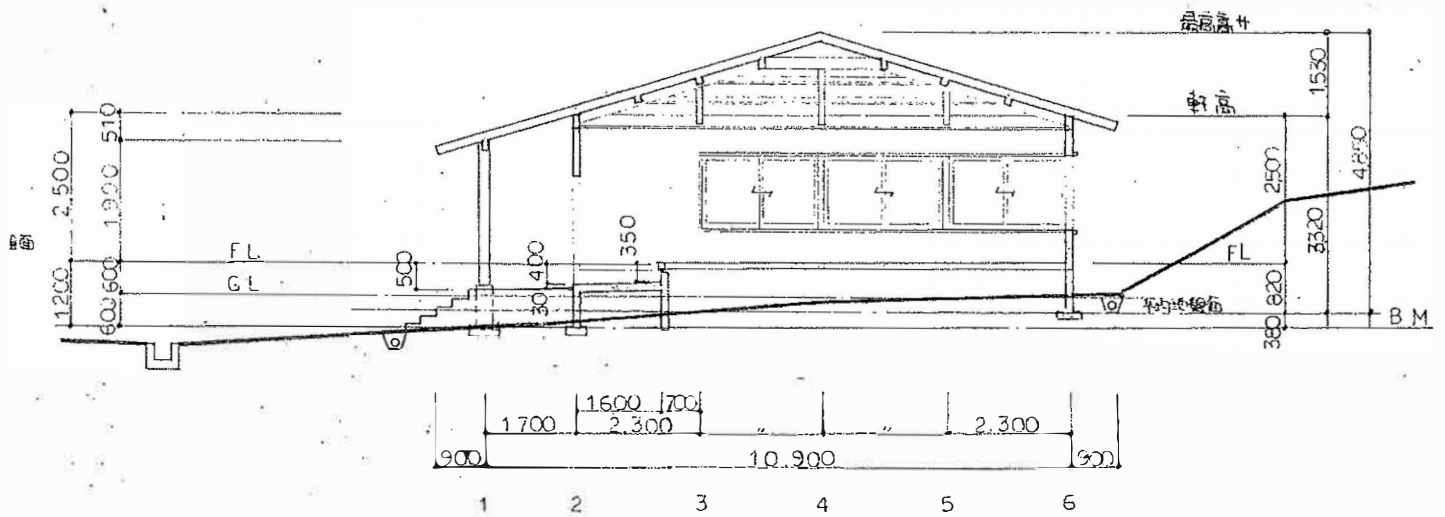


东侧立面图 1:100

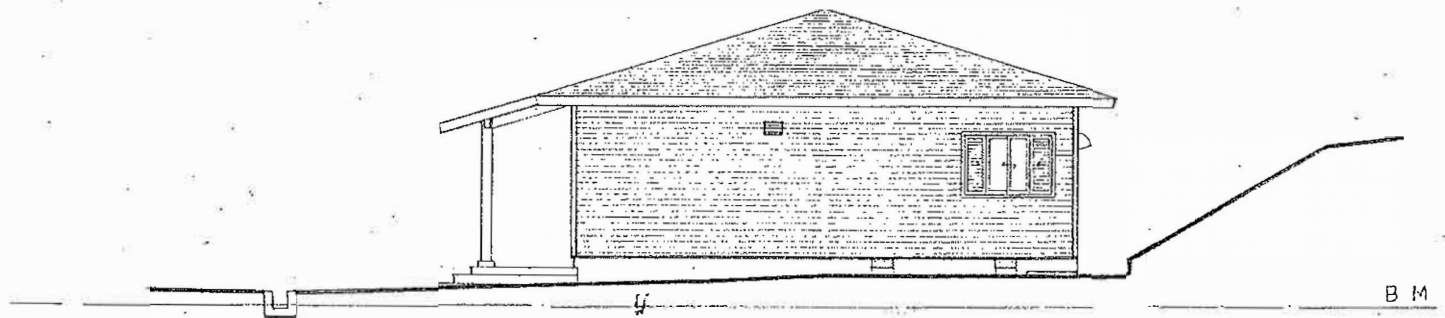


西侧立面图 1:100

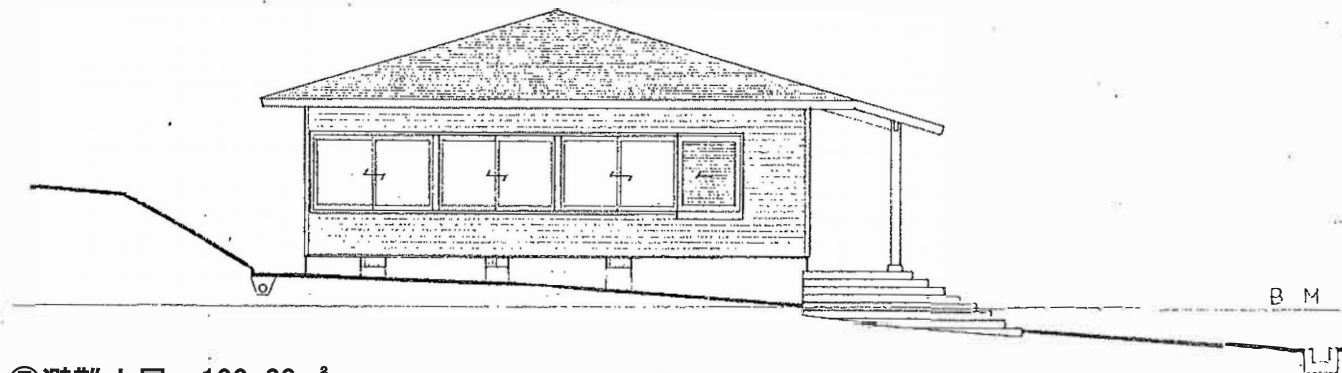
⑤避難小屋：100.28㎡



断面図 2 1:100

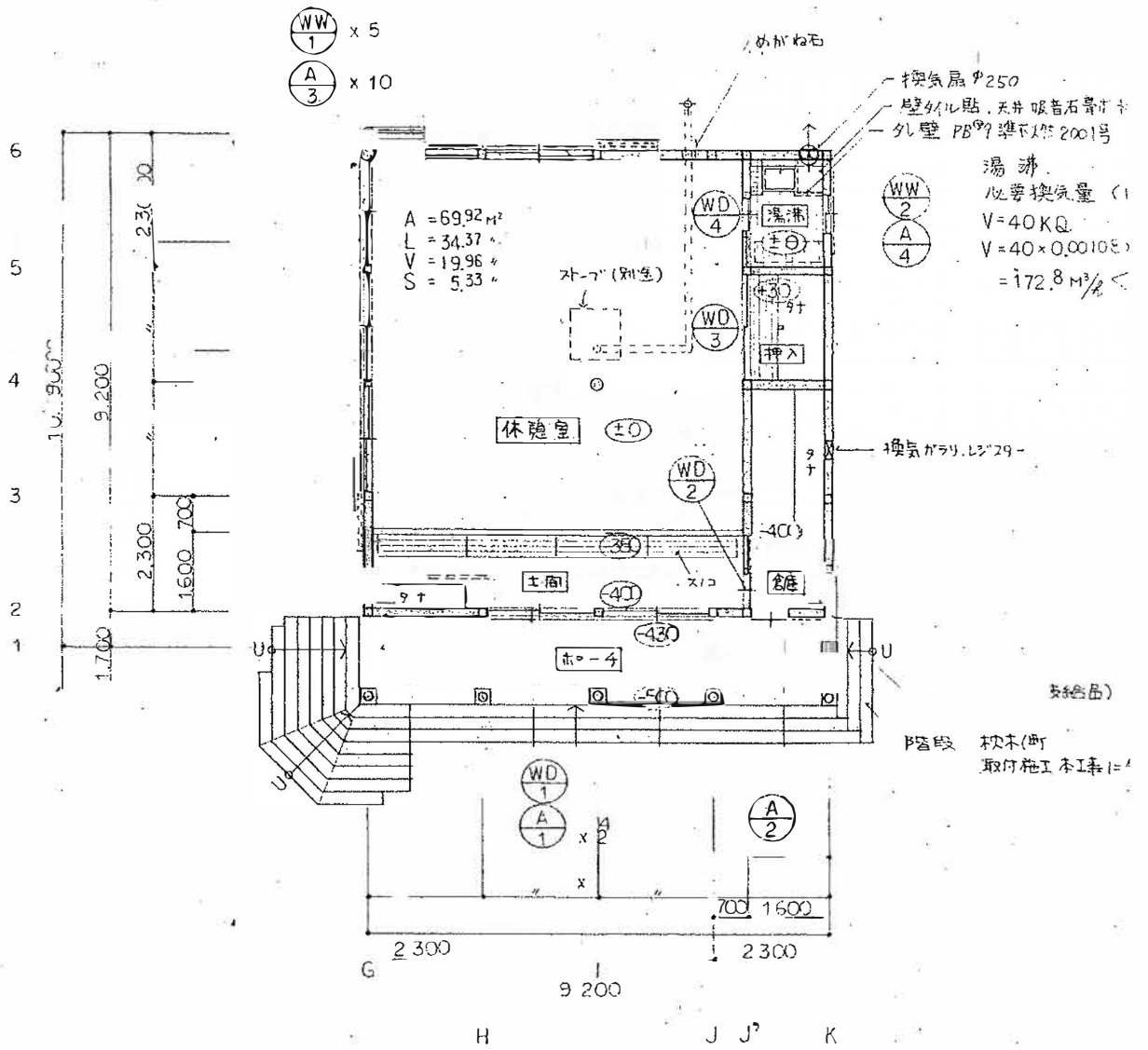


北側立面図 1:100



⑤避難小屋 : 100.28㎡

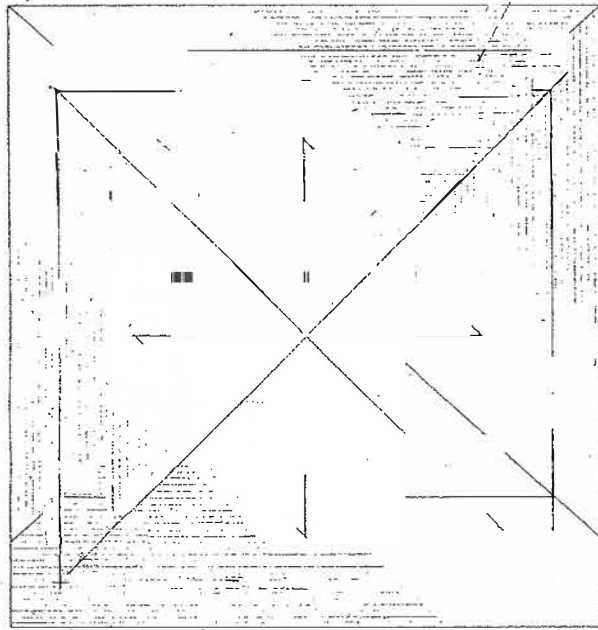
東側立面図 1:100



⑤ 避難小屋 : 100.28 m<sup>2</sup>

平面図 1:100

屋根  
 耐水合板(1種)φ12 貝掛化粧野地板(13×150合波)  
 アスファルトフェルト 22 kg/m<sup>2</sup>  
 シングル葺



軒先全周 \*10カラ-鉄板 t0.35

⑤避難小屋 : 100.28m<sup>2</sup>